



Durango Early Learning Center

# THE DELC DIGEST

## FEBRUARY 2025

### IMPORTANT DATES

- 2/5 Durango Kids Pediatric Dentistry - Tooth Fairy Visit! 9:00am
- 2/11 Board Meeting 5:45pm
- 2/14 PJ DAY & School Family Time 10:00am
- 2/17 NO SCHOOL PRESIDENT'S DAY
- 2/18 Staff Meeting 5:30pm
- 3/5 12:30pm - 3/7 NO SCHOOL Staff ECE Conference in Denver
- 3/17 - 3/21 NO SCHOOL SPRING BREAK



- 2/9 Alex
- 2/18 Penelope
- 2/20 Katrina
- 2/23 sophia
- 2/29 Anna



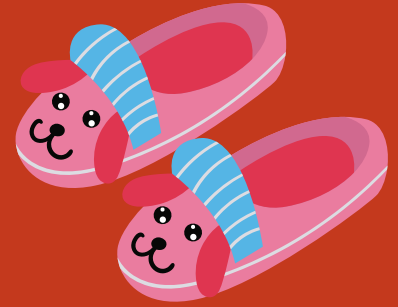
## Gray Matters

Brittney Cowan, Izzi's mom, taught all of the preschool classes about how to protect our brains! She fit everyone with the correct size bike helmet and donated all new helmets to the school!

2025.26  
Registration Forms & \$125 Fee  
due March 14th

REGISTRATION will be emailed and sent via brightwheel during the first week of February! After March 14th, we can no longer hold your child's spot and will be opening up any remaining availability to lottery families.

PAJAMAS  
ALL DAY



Feb  
14th



12:30PM Weds 3/5  
- Fri 3/7

Reminder: DELC is sending the entire staff to the Rocky Mountain Early Childhood Conference in Denver!

Thank you for supporting our professional development journey so we can best serve your children!

# Conscious Discipline Corner

We all get upset. Your goal is to regain self-control once you have become upset, before you deal with your children. You must discipline yourself first, and your children second.

 ConsciousDiscipline®

In Conscious Discipline, we use an **"adult-first, child second"** model. This means you can't teach a child a skill **you** don't possess.

 ConsciousDiscipline®





# Afternoon Clubs

## Pattern Bracelets



### Colorado Early Learning and Development Guidelines

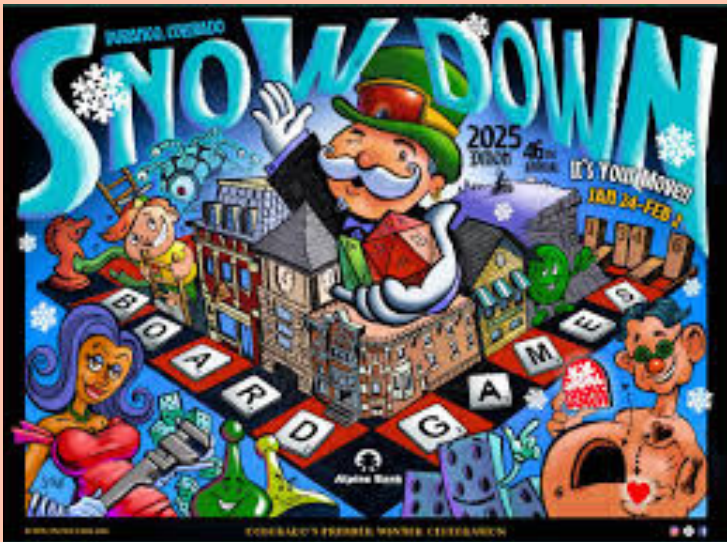
#### Physical Development and Health

- 3.1: Develop hand strength and dexterity.
  - 3.2: Develop hand strength and dexterity.
- #### Social and Emotional Development
- 3.2: Develop hand strength and dexterity.
  - 3.3: Persist in tasks.

#### Mathematics and Knowledge Skills

- 2.5: Duplicate simple patterns in a different location than demonstrated, such as making the same alternating color pattern with blocks at a table that was demonstrated on the rug. Extend patterns, such as making an eight-block tower of the same pattern that was demonstrated with four blocks.
- 2.6: Identify the core unit of sequentially repeating patterns, such as color in a sequence of alternating red and blue blocks.





## Durango Early Learning Center Land Acknowledgement

Welcome to the Durango Early Learning Center. We respectfully acknowledge that the school is located in Durango, Colorado, the ancestral and unceded territory of the Ute (Núu-agma-tʼv̥v̥-p̥v̥), Diné (Navajo: Naabeehó Bináhásdzo), Hopi (Hopituh Shi-nu-mu) Pueblos, Apache and Zuni (Shiwi'ma) People who have been stewards of this land throughout generations. As early childhood care providers and educators of our future generation, it is our responsibility to acknowledge the impacts of the unkind acts that have led to the unfair and inappropriate treatment of people that traditionally lived here and still live here today. We lead by example and share stories of this land that are respectful to the people and the real history of this region. As we teach our children, we strive to nurture a culture that takes responsibility for our actions, and is curious, honest, and inclusive to the diverse backgrounds in our community. #HonorNativeLand